

# Matthew 17:1-13

**“The Transfiguration  
Of Jesus Christ!”**





**1 John 4:4 (NKJV)**  
**4 You are of God, little children, and have overcome them, because He who is in you is greater than he who is in the world.**

**Romans 8:9 (NKJV)**

**9 But you are not in the flesh but in the Spirit, if indeed the Spirit of God dwells in you. Now if anyone does not have the Spirit of Christ, he is not His.**

## Matthew 16:28 (NKJV)

**28 Assuredly, I say to you, there are some standing here who shall not taste death till they see the Son of Man coming in His kingdom.”**

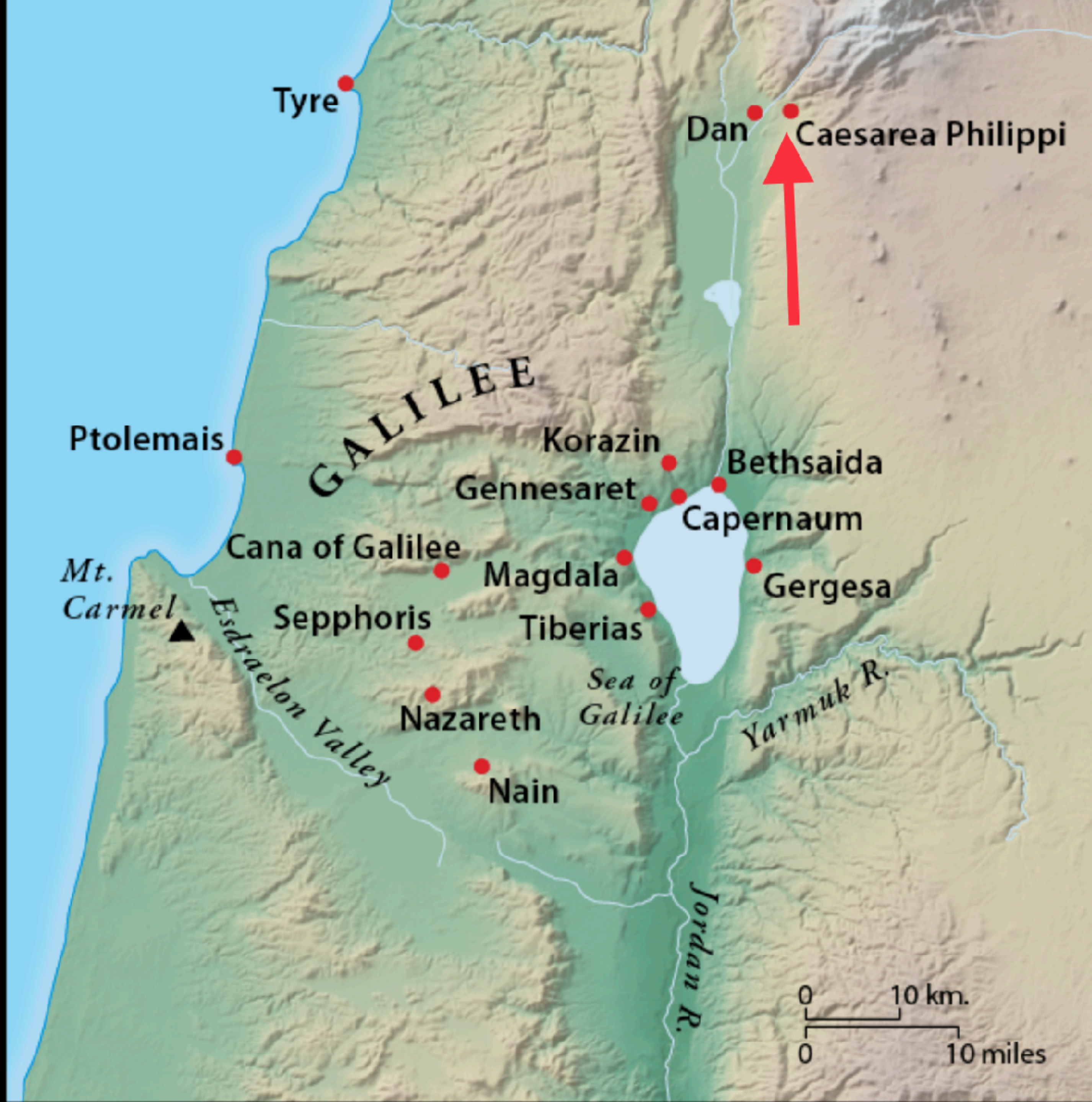
# Matthew 17

- \* **Deuteronomy 19:15**
- \* **Numbers 35:30**

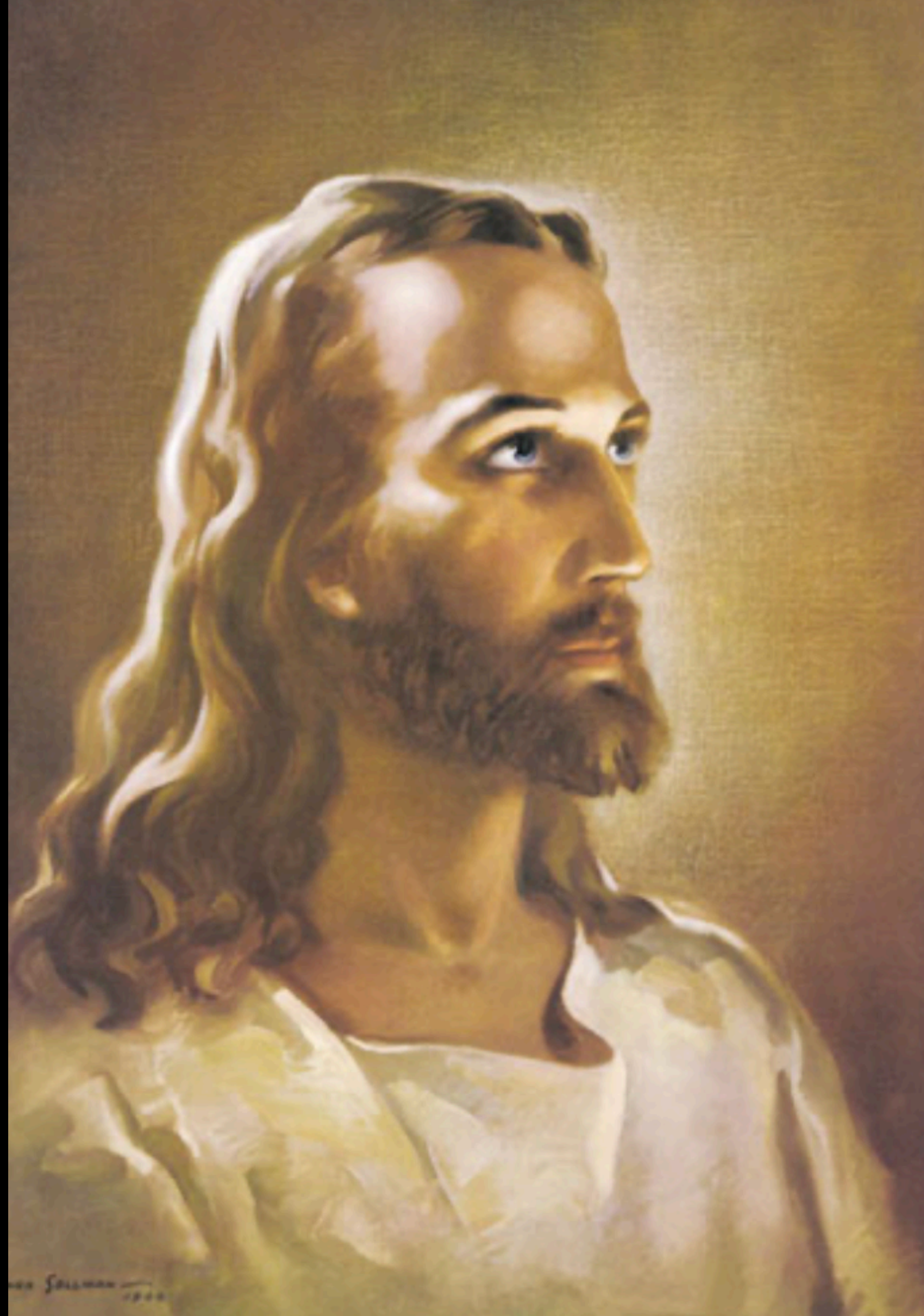
# Matthew 17

- \* **2 Peter 1:16-18**
- \* **John 1:14**











# Matthew 17

- \* **Isaiah 53:1-3**
- \* **Revelation 1:12-16**



# REPRESENTATIVES OF THOSE TO INHERIT THE KINGDOM

1. The disciples represent individuals who will be present in physical bodies
2. Moses represents saved individuals who have died or will die
3. Elijah represents saved individuals who will not experience death, but will be caught up to heaven alive



**Luke 9:30-31 (NKJV)**

**30 And behold, two men talked with Him, who were Moses and Elijah, 31 who appeared in glory and spoke of His decease which He was about to accomplish at Jerusalem.**



# Matthew 17

- \* **John 1:1-3**
- \* **Colossians 1:15-18**



# Matthew 17

- \* Deuteronomy 12:1-14
- \* 2 Samuel 7:1-13



*Matthew 17*

**\* Matthew 26:31-35**



# Matthew 17

- \* Exodus 13:20-22
- \* Exodus 24:15-18
- \* Ezekiel 10 & 11

# Matthew 17

- \* Psalm 2
- \* Deuteronomy 18:18-22



# Matthew 17

- \* **Philippians 2:5-11**
- \* **John 8:28-29**
- \* **Matthew 3:13-17**

*Matthew 17*

- \* **Revelation 1:17**
- \* **Daniel 10:4-11**
- \* **Revelation 19:9-10**



*Matthew 17*

**\* Acts 4:10-12**

# Matthew 17

- \* **Mark 9:10**
- \* **Matthew 16:21**
- \* **John 2:18-22**



*Matthew 17*

- \* **Malachi 3:1**
- \* **Malachi 4:5-6**
- \* **Luke 1:15-17**
- \* **Matthew 11:11-15**



**Calvary Chapel  
of Rochester**